


TVDSB – CTCC PROGRAMS

*Supporting and Teaching in Care
&/or Treatment, Custody and
Correctional Programs*

CTCC Education Programs

Exist only for children and youth
who cannot attend schools because of
their primary need for care, treatment
and/or rehabilitation.



CTCC Education Programs

Based on collaborative model of
shared responsibilities

- **School Board** –educational
programming
- **CTCC Facility** –care, and/or
treatment, rehabilitation services

Partnership Programs

- School Board
 - Education Programs
 - Elementary
 - Secondary
- Community Agency
 - CPRI
 - Anago
 - Craigwood
 - Vanier
 - WAYS
 - Wellkin
 - LHSC/SJHC
 - YCFC

TVDSB - CTCC

- 9 Agency Partners
- 17 Programs

**Refer to chart provided*


Governance

- Ministry of Education
 - Guidelines for Approval and Provision of Care and/or Treatment, Custody and Correctional Programs
 - Updated annually



Ministry of Education Transformation

- The Ministry of Education recognizes that school boards have an increased capacity to accommodate the needs of diverse learners who may have utilized CTCC Education Programs in the past.



- TVDSB makes annual applications to the Ministry to continue the existing CTCC programs
- TVDSB has legal agreements with each Agency partner; renewed annually
- Min. of Education monitoring occurs on a site by site basis; 3 year cycle



Partnership Programs

- Our most successful programs
 - Joint planning
 - Multi-disciplinary approach
 - Transition planning
 - Differentiated instruction
 - Social – emotional learning skill teaching

By the numbers...

Student Admissions:

- 2015 – 2016 694
- 2016 – 2017 481
- 2017 – 2018 460
- 2018 – present 260

By the numbers...

Staff

Elementary Teachers	15
Secondary Teachers	18
Office	1.5
Administration	2

Admissions

- Clients of agency
- PTR = 8:1 (or 6:1)
- Residential programs
- From many different school boards

Student Profiles

- Increasingly complex
- Trauma
- CAS clients
- K – 12

Classrooms

- Only 1 located in a TVDSB community school
- Agency provides classroom support worker(s)
- No Educational Assistants

Challenges

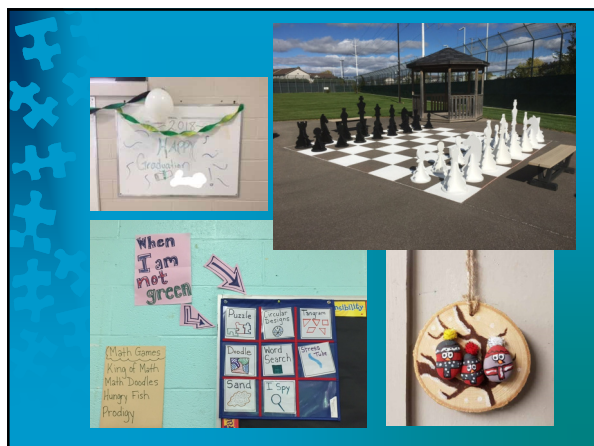
- Agencies
 - consistent & enough staffing
 - funding
 - different methodological for treatment
 - different procedures

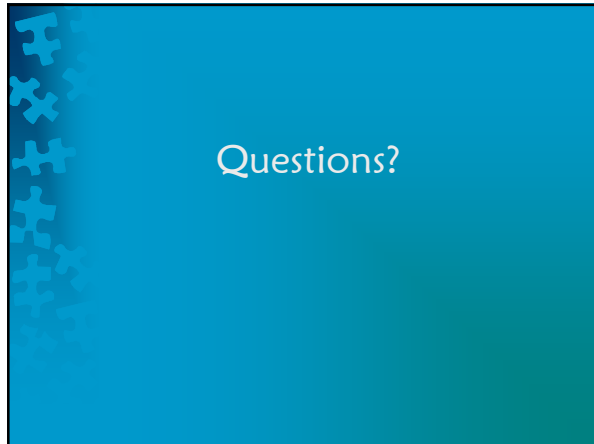
Challenges

- School
 - transition planning and process
 - multi-disciplinary approach
 - continuous enrolment
 - different procedures from agencies
 - low enrolment at some sites

Supporting our Students

- Co-op program; experiential learning
- Field trips
- Utilizing community school
- Global competencies
- Explicit instruction for social –emotional learning skills
- Partnerships





TVDSB – CTCC PROGRAMS: 2018 – 2019

Agency Partner	Program Type			Admissions 2017-18	# Places	Residential vs Day Treatment	Grades					General
	Care &/or Treatment	Custody & Corrections					K	1-3	4-6	7-8	9-12	
Anago (Non) Residential Resources, Inc.	✓		Anago Parkhill Therapeutic Care Residence	15	11+	R				✓	✓	Mental Health
		✓	Genest Detention Centre for Youth	17	16	R				✓	✓	Youth Justice
		✓	King Street Detention Centre	14	12	R				✓	✓	Youth Justice
Craigwood Youth Services	✓		Day Treatment Program, London	18	8	DT				✓	✓	Mental Health
	✓		Campus Residential Program, Ailsa Craig	28	25	R				✓	✓	Mental Health; social-emotional & behaviour challenges.
		✓	Woodview Program, Ailsa Craig	14	10	R				✓	✓	Youth Justice
Children’s Hospital of Western Ontario, LHSC	✓		Child & Adolescent Mental Health	74	12+	R				✓	✓	Mental Health
	✓		Eating Disorders (Inpatient & Outpatient)	10	12	R & DT				✓	✓	Mental Health
	✓		Child Pediatrics (Inpatient & Ronald McDonald House)	21	8+	R & DT		✓	✓	✓	✓	Medical Care
Parkwood Institute, SJHC	✓		Adolescent Mental Health (Inpatient)	46	13	R & DT				✓	✓	Mental Health
Wellkin Child & Youth Mental Wellness	✓		Pittock Day Treatment Program, Tillsonburg	9	8	DT			✓			Mental Health; social-emotional & behaviour challenges.
Youth Centre for Change	✓		Residential Program, London	8	12	R				✓	✓	Treatment for Sexualized Behaviour
Vanier Children’s Services	✓		Residential Program (Gr 1-8)	34	24	R		✓	✓			Mental Health, Trauma, Psychological and Psychiatric disorders
	✓		Early Intervention Program (K)	7	6	DT	✓					Mental Health; social-emotional challenges.
WAYS Mental Health Support	✓		Maitland Street	14	8	R & DT				✓	✓	Mental Health
	✓		Sylvan Street	15	8	R & DT				✓	✓	Mental Health
CPRI	✓		Madeline Hardy School	42	30	R (*DT)		✓	✓	✓		Assessment for Mental Health, Developmental, Psychological and/or Psychiatric disability/disorder.