



Date of Meeting: 21 MAR 23

Item #: 12.a

REPORT TO:	<input type="checkbox"/> Administrative Council <input type="checkbox"/> Program and School Services Advisory Committee <input type="checkbox"/> Policy Working Committee <input type="checkbox"/> Planning and Priorities Advisory Committee <input checked="" type="checkbox"/> Board <input type="checkbox"/> Other:
	For Board Meetings: <input checked="" type="checkbox"/> PUBLIC <input type="checkbox"/> IN-CAMERA
TITLE OF REPORT:	London Attendance Area Review – Project Update
PRESENTED BY: (list ONLY those attending the meeting)	Jeff Pratt, Associate Director Geoff Vogt, Superintendent of Facility Services and Capital Planning Ben Puzanov, Manager of Planning
PRESENTED FOR:	<input type="checkbox"/> Approval <input type="checkbox"/> Input/Advice <input checked="" type="checkbox"/> Information
Recommendation(s):	That the project update report regarding the London attendance area review be received for information.
Purpose:	To provide a status update regarding the London attendance area review.
Content:	<p>Background</p> <p>At the December 15, 2020 Board meeting, Trustees approved the following motion: <i>“That Administration be directed to prepare an Initial Attendance Area Review Report for both the elementary and secondary panels in the City of London for the purpose of reducing enrolment pressure at overutilized schools and improving the use of empty pupil places at underutilized schools.”</i></p> <p>The purpose of the subject attendance area review is to address the student distribution imbalance across both panels in London. Significant development activity and population growth has been occurring in the City’s westerly and northerly neighbourhoods. As a result, many schools in these areas of London are either approaching or are over their designed capacity, with the additional enrolment being managed through the use of interim accommodations in the form of portables and holding zones. In addition to the enrolment pressure being experienced in various areas of the City, there are also schools that are underutilized and are projected to either remain so or experience further enrolment decline.</p> <p>The Ministry of Education has advised Administration that the board should improve school utilization across the district, including specifically in London, prior to seeking capital funding to address accommodation pressures. As a result, a comprehensive intervention is needed in order to resolve the significant enrolment imbalance across the City. Given the inability to utilize pupil accommodation reviews because of a provincial moratorium, the attendance area review process is currently the best tool available to address this issue.</p> <p>Project Update</p>

	<p>Subsequent to receiving Trustee direction regarding the scope of the review at the December 15, 2020 Board meeting, considerable work has gone into undertaking a review of student distribution and the availability of pupil spaces across the City. Administration's focus has been on identifying areas of London where immediate solutions could be implemented in order to start the process of balancing enrolment city-wide as expeditiously as possible.</p> <p>There are 68 elementary schools and 14 secondary schools that are being examined as part of the subject attendance area review; with approximately 31,400 elementary students and 13,300 secondary students residing within London. A number of schools being examined through the review are located in Middlesex County and have portions of their attendance areas located in London. Through discussions with City planning staff, it was determined that London is estimated to grow by over 21,000 units over the next 10 years, with 46% of that growth occurring in the form of low density residential development, 23% being medium density and 31% being high density.</p> <p>Upon review of the elementary panel specifically, it was determined that approximately 50% of the schools in London are currently well utilized, with facility utilizations ranging from 80-110%. Approximately 25% of schools are underutilized (< 80%) and a further 25% are overutilized (> 110%). Eight elementary schools are projected to be below 70% utilization over the next five years; collectively these schools will account for approximately 1,560 empty pupil places.</p> <p>The analysis completed to date has confirmed that there are no simple solutions to provide immediate relief to overcapacity schools in rapidly growing neighbourhoods of London. The primary reason for this is that the majority of available space is concentrated in the east end of the City while the greatest need is in the west and north. Administration sought out potential solutions that could be implemented quickly in order to begin the process of providing enrolment pressure relief to those schools that need it most but there is insufficient consolidated pupil space available at nearby schools. A broader approach is necessary to implement sustainable accommodation solutions. Thus, additional time is required to formulate options for potential attendance area changes across the City and the preparation of an Initial Attendance Area Review Report.</p>
Financial Implications:	The current year costs for the subject Attendance Area Review will be accommodated within the 2020-2021 budget.
Timeline:	<p>Administration is continuing the research and evaluation phase of the London attendance area review. Given the complexity, scope and number of schools being examined, more time is needed to prepare an Initial Attendance Area Review Report with preliminary options for Trustees' consideration.</p> <p>Administration is working towards completing the foundational phases of this analysis by May, which will culminate with the identification of specific schools whose enrolment pressure or facility underutilization can be practically addressed through an attendance area review process.</p> <p>Preliminary options for potential attendance area changes will be prepared in early summer and finalized by the end of August or early Fall. Administration</p>

	<p>will present the Initial Attendance Area Review Report to the Board this Fall, with public consultation to follow in late 2021 and early 2022.</p> <p>The presentation of the Final Attendance Area Review Report, public delegations and a decision by Trustees would be expected to occur prior to the end of the 2021/2022 school year. Given the timelines for school registration, implementation of any attendance area changes would occur in September, 2023.</p>
Communications:	N / A
Appendices:	N / A

Strategic Priority Area(s):

Relationships:	<input type="checkbox"/> Students, families and staff are welcomed, respected and valued as partners. <input checked="" type="checkbox"/> Promote and build connections to foster mutually respectful communication among students, families, staff and the broader community. <input type="checkbox"/> Create opportunities for collaboration and partnerships.
Equity and Diversity:	<input checked="" type="checkbox"/> Create opportunities for equitable access to programs and services for students. <input checked="" type="checkbox"/> Students and all partners feel heard, valued and supported. <input checked="" type="checkbox"/> Programs and services embrace the culture and diversity of students and all partners.
Achievement and Well-Being:	<input type="checkbox"/> More students demonstrate growth and achieve student learning outcomes with a specific focus on numeracy and literacy. <input type="checkbox"/> Staff will demonstrate excellence in instructional practices. <input checked="" type="checkbox"/> Enhance the safety and well-being of students and staff.

Form Revised January 2020



London Attendance Area Review Project Update

March 23, 2021

Background

June 23, 2020 Board resolution

“That the next attendance area review address the significant student distribution problem in the City of London, pending Capital Priorities submission results, as well as the overcapacity accommodation issue at Roch Carrier French Immersion Public School.”

Capital Priorities Submission Results

Ministry of Education encouraged Administration to develop accommodation solutions that address both enrolment pressure and facility under-utilization.

December 15, 2020 Board resolution

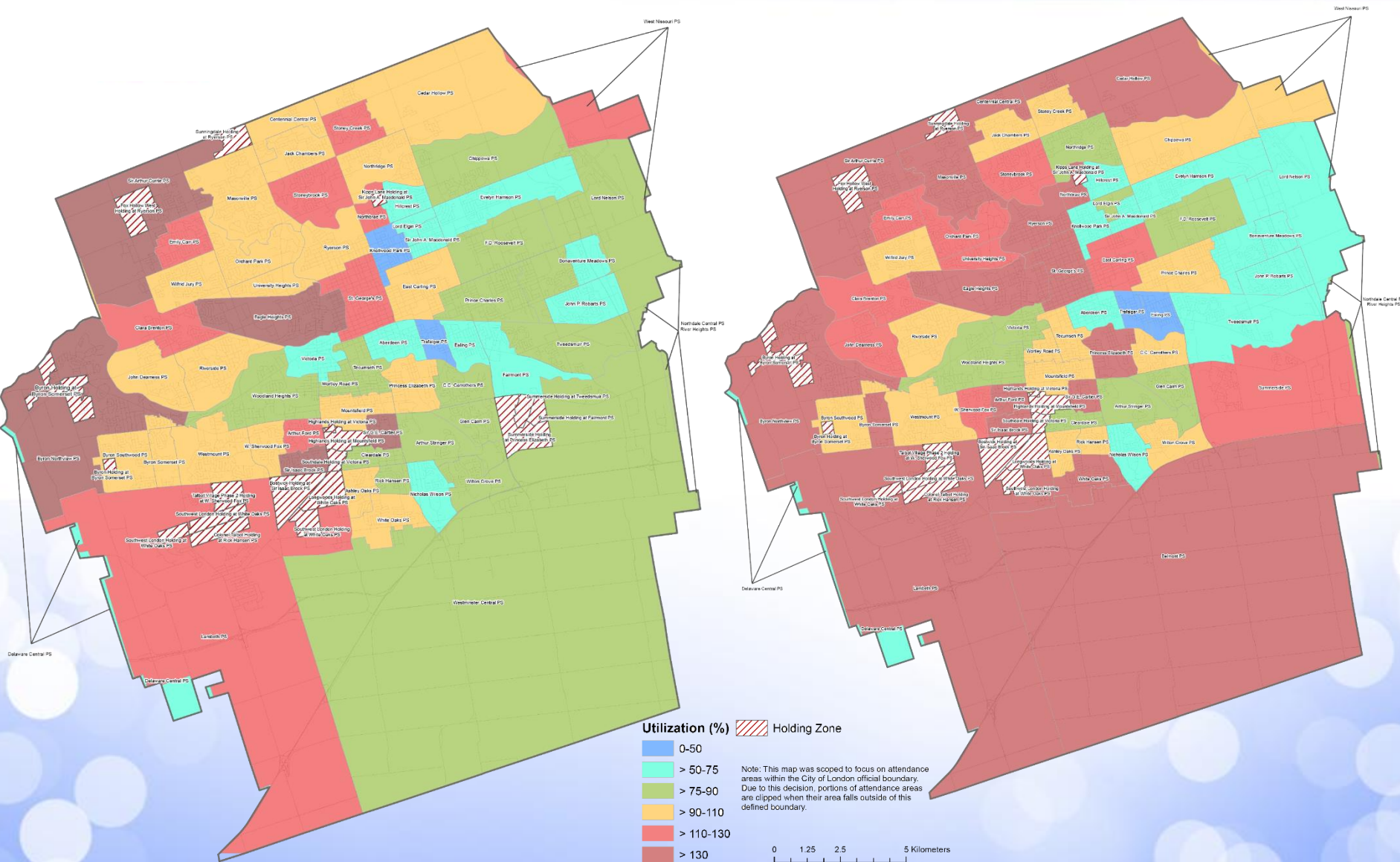
“That Administration be directed to prepare an Initial Attendance Area Review Report for both the elementary and secondary panels in the City of London for the purpose of reducing enrolment pressure at overutilized schools and improving the use of empty pupil places at underutilized schools.”

Project Scope

- 68 Elementary Schools
- 14 Secondary Schools
- 3 new approved Schools (NW London, SE London, Belmont)
- Approximately 31,400 elementary students and 13,300 secondary students reside within London
- The City of London is anticipated to grow by over 21,000 units over the next 10-year period (46% low density, 23% medium density and 31% high-density)

London Elementary Attendance Areas (English-track): School Utilization (2020/2021)

London Elementary Attendance Areas (English-track): School Utilization (2025/2026)



Current Situation - Elementary

50-50

1/2 of the elementary schools in the City of London are currently well-utilized and 1/2 of the elementary schools are over or under-utilized.

- ~50% of elementary schools are 'well' utilized (between 80%-110%)
- ~25% of elementary schools are 'under' utilized (below 80%)
- ~25% of elementary schools are 'over' utilized (over 110%)

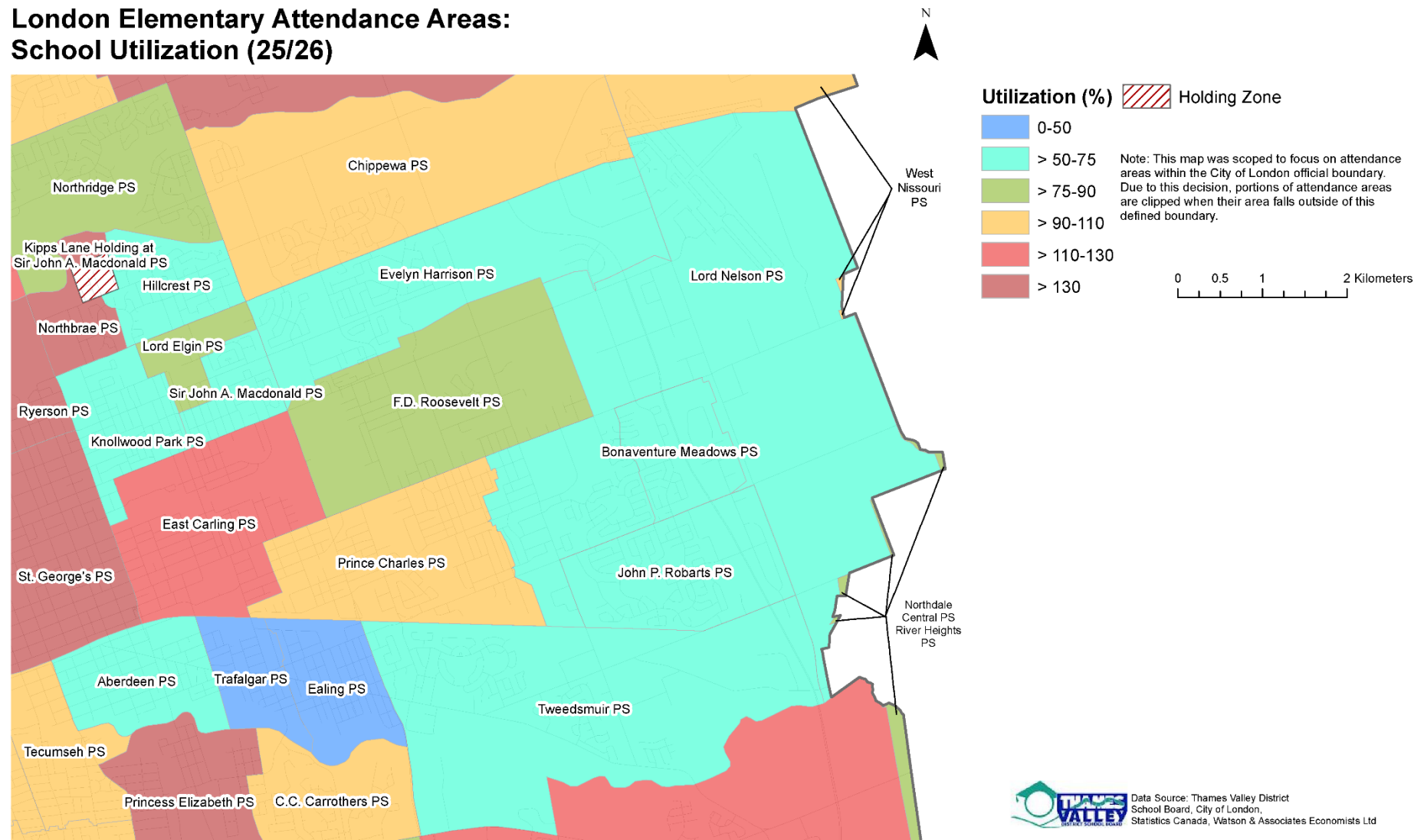
Surplus Space

- When incorporating 5-year enrolment projections, 12% of London elementary schools will have utilization rates between 70%-80%.
- 8 schools are projected to be poorly utilized at below 70% (2 under 60%, 1 @ 51%, 1 @ 28%). These schools account for ~1,560 surplus spaces.

Name	Planning Area	OTG Capacity	2019 Enrolment	5-year Projected Enrolment (2024/25)	5-year Utilization
Aberdeen PS	4	378	230	262	69%
Lord Nelson PS	6	619	503	419	68%
John P Robarts PS	6	677	512	450	67%
Bonaventure Meadows PS	6	518	405	341	66%
Nicholas Wilson PS	11	420	265	247	59%
Knollwood Park PS	5	447	239	240	54%
Ealing PS	4	343	198	174	51%
Trafalgar PS	4	409	133	116	28%

Location, Location, Location

London Elementary Attendance Areas: School Utilization (25/26)



Enrolment Pressures

- 14 English Track elementary schools are projected to operate above 130% utilization.
 - ~ 3500 students above the permanent capacity of those schools.
- 9 London elementary schools currently have at least 20% of their total enrolment accommodated in temporary space (portables/portapaks).

How are approved and proposed new schools going to help?

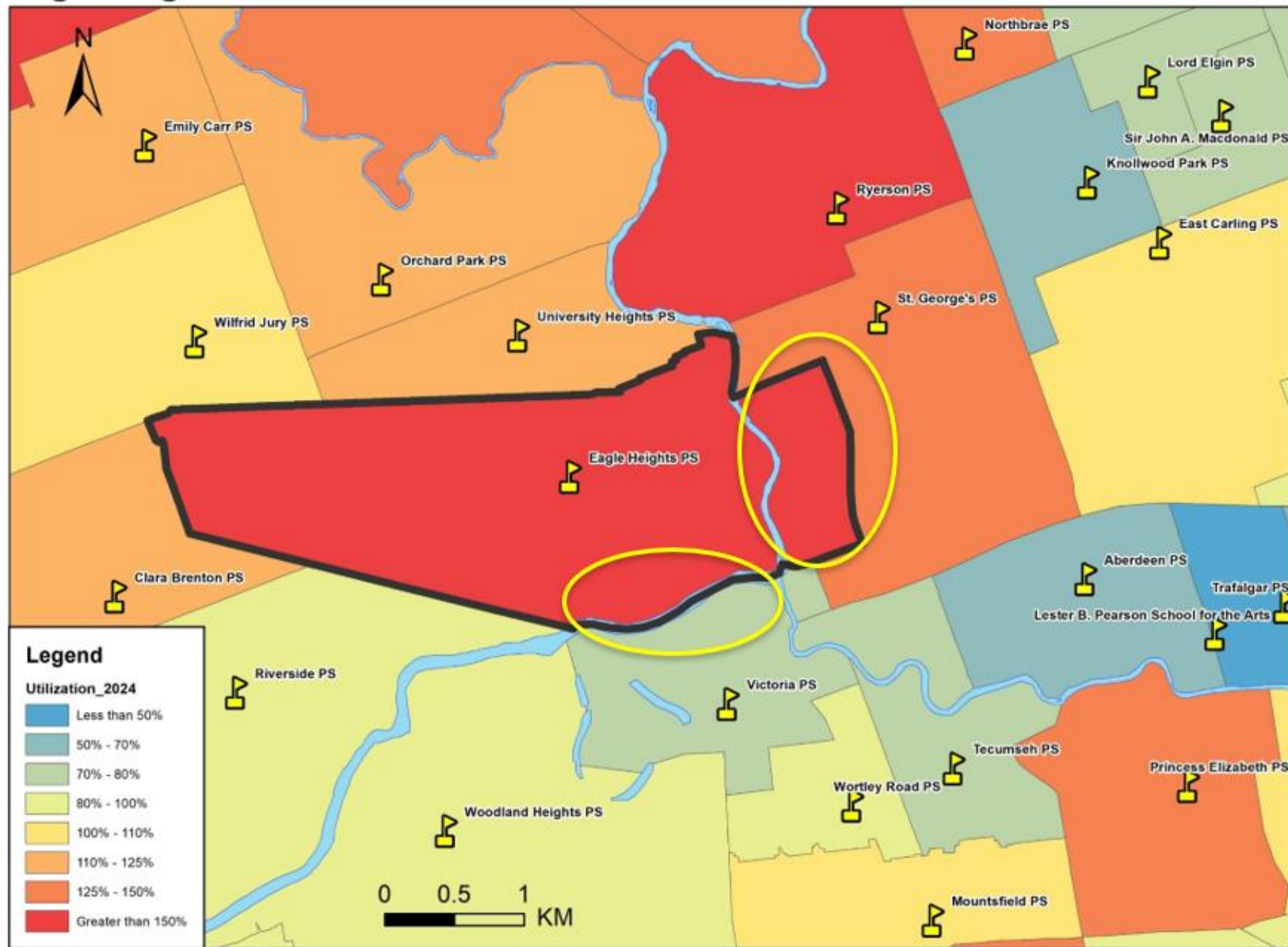
Over Capacity

London Elementary Schools



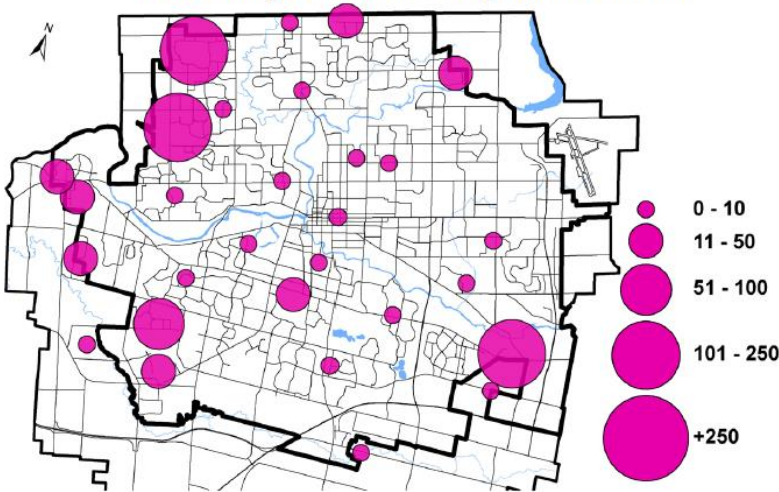
Name	Planning Area	Portables and Portapacks	OTG Capacity	2019 Enrolment	5-year Projected Enrolment (2024/25)	5-year Utilization	5-year Functional Utilization	% Enrolment In Temporary Space (2019)
Sir Arthur Currie PS	1	12	533	726	1,062	199%	131%	27%
Sir Isaac Brock PS	9	11	349	567	626	179%	104%	38%
Ryerson PS	4	3	438	472	733	167%	145%	7%
Lambeth PS	12	10	628	775	1,038	165%	121%	19%
Eagle Heights PS	3	18	680	1,015	1,106	163%	101%	33%
Cedar Hollow PS	2	3	628	620	970	154%	139%	0%
Arthur Ford PS	9	6	320	425	481	150%	105%	25%
Byron Somerset PS	7	2	409	396	599	146%	132%	0%
St George's PS	4	3	307	321	427	139%	114%	4%
Masonville PS	2	10	614	651	828	135%	98%	6%
Sir George-Etienne Cartier PS	10	7	251	341	337	134%	82%	26%
Byron Northview PS	7	7	452	625	600	133%	98%	28%
White Oaks PS	10	4	829	880	1,082	130%	117%	6%
Northbrae PS	5	4	380	482	495	130%	105%	21%

Eagle Heights

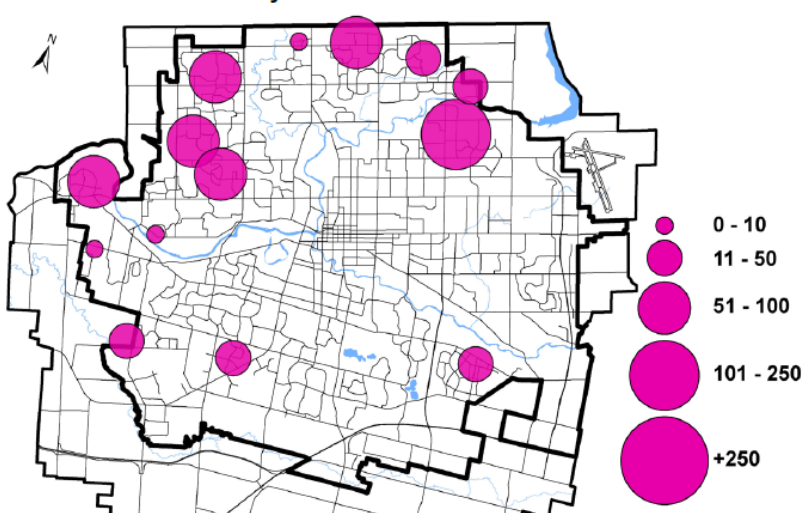


Growth in London – 2019 Permits

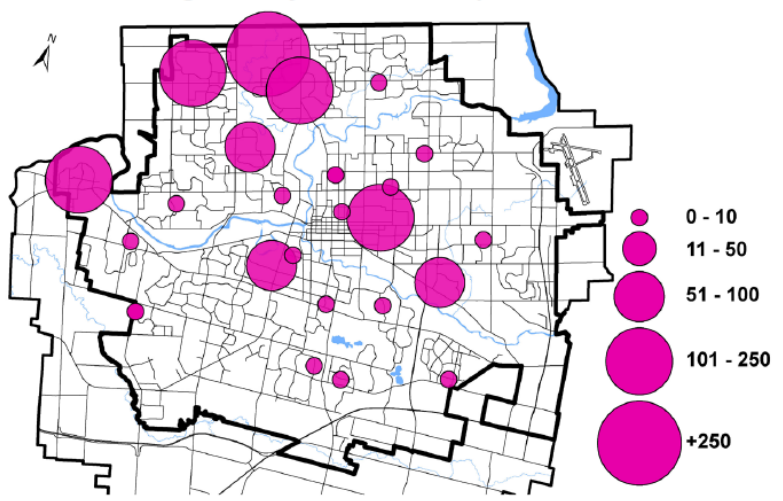
Low Density Residential – Single/Semi Detached



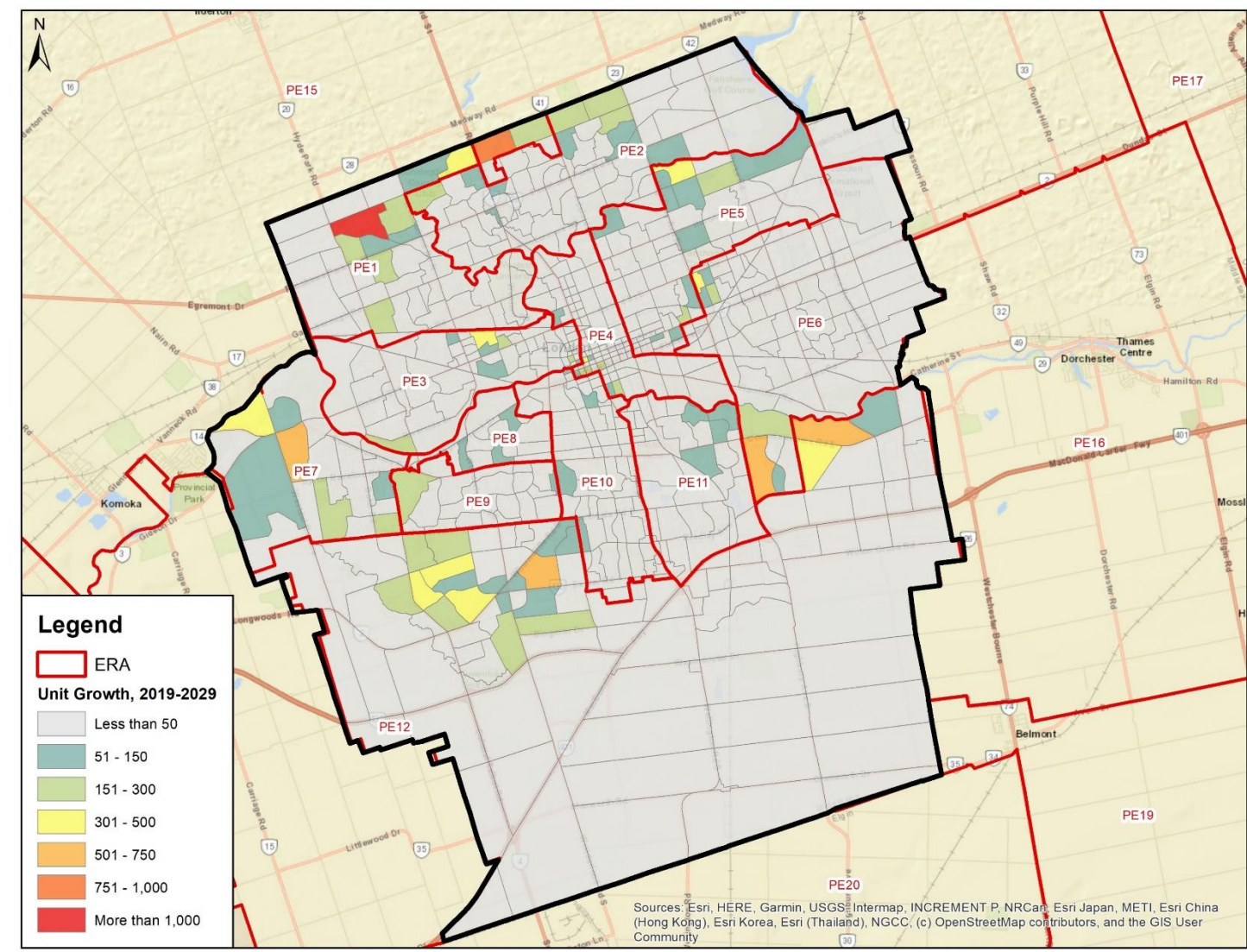
Medium Density Residential – Rowhouse/Townhouse



High Density Residential – Apartments



Growth in London – Anticipated unit growth 2019-2029



Summary Of Issues and Other Concerns

- School utilizations/locations
 - The domino effect: Straight-forward solutions involving a minimal number of schools with minimal disruption are not apparent at this point in the analysis.
- Proposed new schools and associated attendance areas/impact on surrounding schools
 - Future residential growth
- Existing holding areas
- Out of boundary students
- Use of satellite or bussing areas
- Limited toolbox

Completed And In Progress

1

Enrolment projections completed for every London elementary and secondary school

2

Met with City of London Planning Department regarding residential growth forecasts and development plans. Plan for continued meetings and updates throughout study.

3

Analysis of existing holding areas. Preparing enrolment scenarios that return holding area students back to their home schools.

4

TVDSB Planning Department continues to evaluate new school openings and opportunities and impacts on existing school boundaries.

5

Preparing comprehensive school by school evaluations.

A Proposed Timeline & Initial Process

