

REPORT TO:	Board of Trustees
	Public or In-Camera: Public
TITLE OF REPORT:	Updated Suspension, Expulsion, and Violent Incident Data
PRESENTERS: <i>(list ONLY those attending the meeting)</i>	Dennis Wright, Superintendent of Achievement Christine Stager, Manager of Research and Assessment Services
REPORT AUTHORS:	Dennis Wright, Superintendent of Achievement Christine Stager, Manager of Research and Assessment Services
PRESENTED FOR:	Information
Recommendations: <i>(only required when presented for approval)</i>	
Purpose: <i>(include context)</i>	To share updated suspension, expulsion, and violent incident data.
Content:	An overview presentation of updated suspension, expulsion, and violent incident data for TVDSB, the region, and the province is provided.
Financial Implications:	N/A
Timeline:	N/A
Communications:	N/A
Appendices:	Appendix A: PDF of PowerPoint presentation, "Updated Suspension, Expulsion, and Violent Incident Data - BELONGING: Create Safe Spaces for All"

Connection to Strategic Directions:

We value students' individual educational paths and provide the tools and resources necessary for student achievement including students with special education needs: No

To support student achievement, our schools and workplaces must be safe spaces for all: Yes

Our goal is to become Ontario's leader in education by fostering a culture of innovation and excellence: No

To inform our decision-making, we will build positive, trusting relationships across our district by increasing community engagement that is accessible, accountable, and transparent: Yes



Thames Valley
District School Board

Updated Suspension, Expulsion, and Violent Incident Data

BELONGING: Create Safe Spaces for All

Regular Board Meeting
October 22, 2024

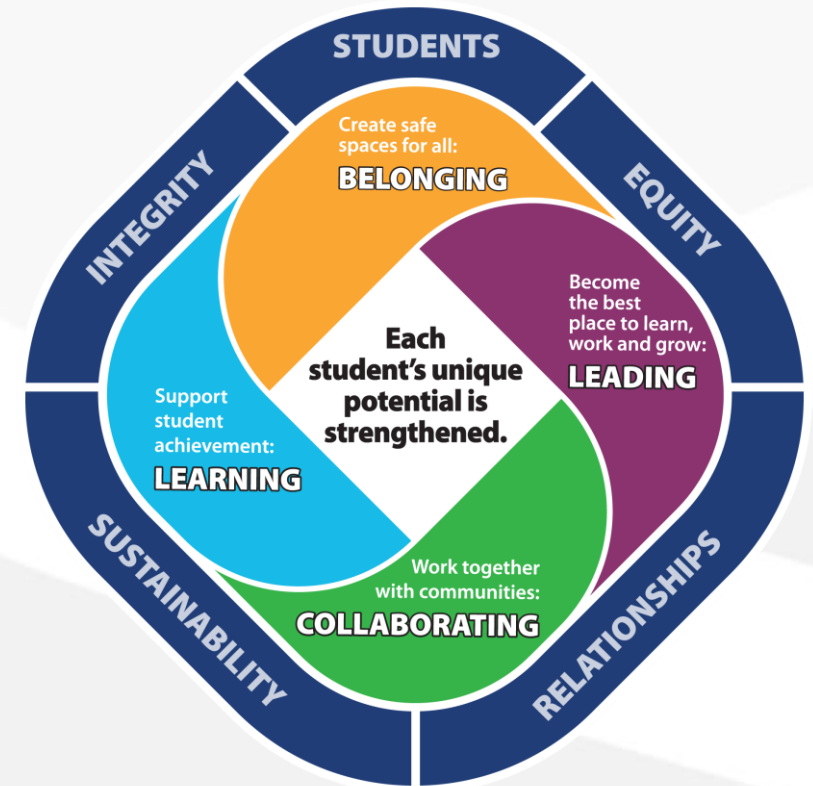


TVDSB Multi-Year Strategic Plan: Strategic Direction #2

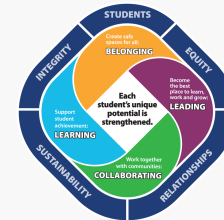
BELONGING - Create Safe Spaces for All

GOALS

- 2.1. The physical, emotional, and mental health of students and staff is prioritized.
- 2.2. A sense of community and connection is fostered within all school and work environments.
- 2.3. Educational environments are created that actively recognize and affirm the identities and abilities of students and staff by fostering inclusivity and respect across the district.



BELONGING: Create Safe Spaces for All



GOALS

OUTCOMES

2.1. The physical, emotional, and mental health of students and staff is prioritized.	2.1.a Students and staff feel safe at school and work.
2.2. A sense of community and connection is fostered within all school and work environments.	2.2.a Students, families, and staff feel connected to school and work. 2.2.b Students are engaged in their learning.
2.3. Educational environments are created that actively recognize and affirm the identities and abilities of students and staff by fostering inclusivity and respect across the district.	2.3.a Staff have the skills to create supportive, inclusive, and respectful classroom environments. 2.3.b Students and staff feel like they belong and are comfortable expressing their identities at school and at work. 2.3.c Students' diverse identities are reflected in each staffing group in the TVDSB.

Updated Suspension, Expulsion, and Violent Incident Data

Suspension Rates Student Achievement Plan Multi-Year Strategic Plan

- Overall Rates (Grades 4 to 12)
- Rates by Panel
- TVDSB compared to Region and Province

Expulsion Rates

- Overall Rates (Kindergarten to Grade 12)
- TVDSB compared to Province

Violent Incident Rates PPM 120

- Overall Rates (Kindergarten to Grade 12)
- TVDSB compared to Region and Province

* Reporting rates versus counts allows for a more accurate comparison across time and with boards.

Using Suspension, Expulsion, and Violent Incident Data

- Monitor implementation of Ministry of Education policy

- Understand impact of broader changes

- Inform planning

- Reflect on effectiveness of programming and practices

Suspension Rate Trends for Students in Grades 4-12

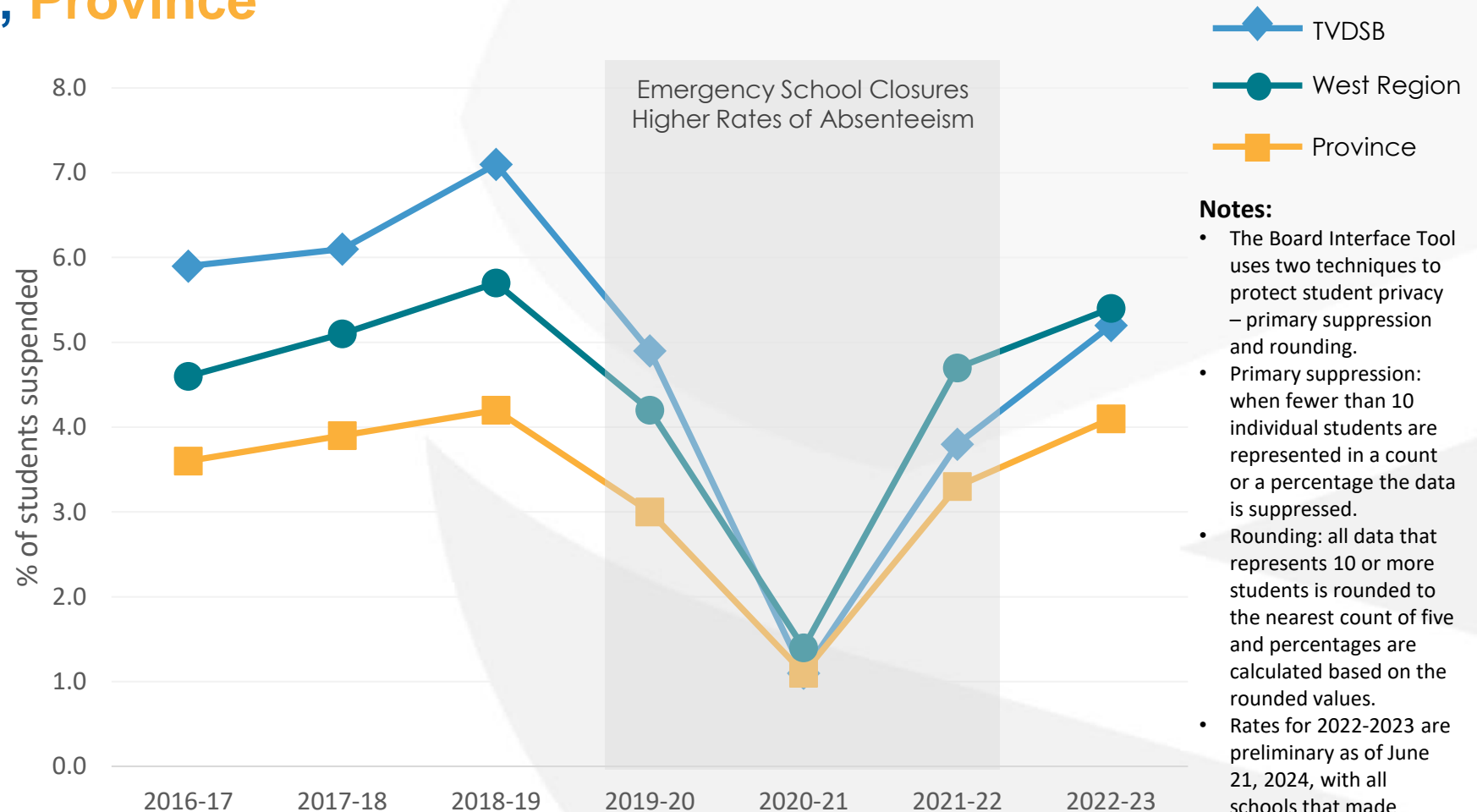
TVDSB, West Region, Province

Prior to emergency school closures, suspension rates were on the rise, peaking in 2018-19.

Widening gap between rates in TVDSB and the Province prior to 2019-20.

TVDSB initiatives beginning in 2019-20:

- New prevention and intervention framework
- Restorative Practices training
- Enhanced communication and support regarding progressive discipline



Source: Ontario Ministry of Education, Board Interface Tool, Suspension Tool

Notes:

- The Board Interface Tool uses two techniques to protect student privacy – primary suppression and rounding.
- Primary suppression: when fewer than 10 individual students are represented in a count or a percentage the data is suppressed.
- Rounding: all data that represents 10 or more students is rounded to the nearest count of five and percentages are calculated based on the rounded values.
- Rates for 2022-2023 are preliminary as of June 21, 2024, with all schools that made submissions to the Ministry of Education.

Suspension Rate Comparisons for Students in Grades 4-12

Compared to the baseline, **TVDSB suspension rates** have **declined**.

TVDSB suspension rates are now **more in line** with boards in the **West Region** and across the **Province**.

	2018-19 (Baseline)	2022-23	Change Over Time
Overall – Grades 4-12			
TVDSB Rates	7.1%	5.2%	↓
GAP with Region	1.4%	-0.2%	↓
GAP with Province	2.9%	1.2%	↓

Source: Ontario Ministry of Education, Board Interface Tool, Suspension Tool

Notes:

- Data presented on this slide was downloaded from the Ministry of Education’s Board Interface Tool.
- The Board Interface Tool uses two techniques to protect student privacy – primary suppression and rounding.
- Primary suppression: when fewer than 10 individual students are represented in a count or a percentage the data is suppressed.
- Rounding: all data that represents 10 or more students is rounded to the nearest count of five and percentages are calculated based on the rounded values.
- Rates for 2022-2023 are preliminary as of June 21, 2024, with all schools that made submissions to the Ministry of Education.
- Baseline year established by TVDSB.

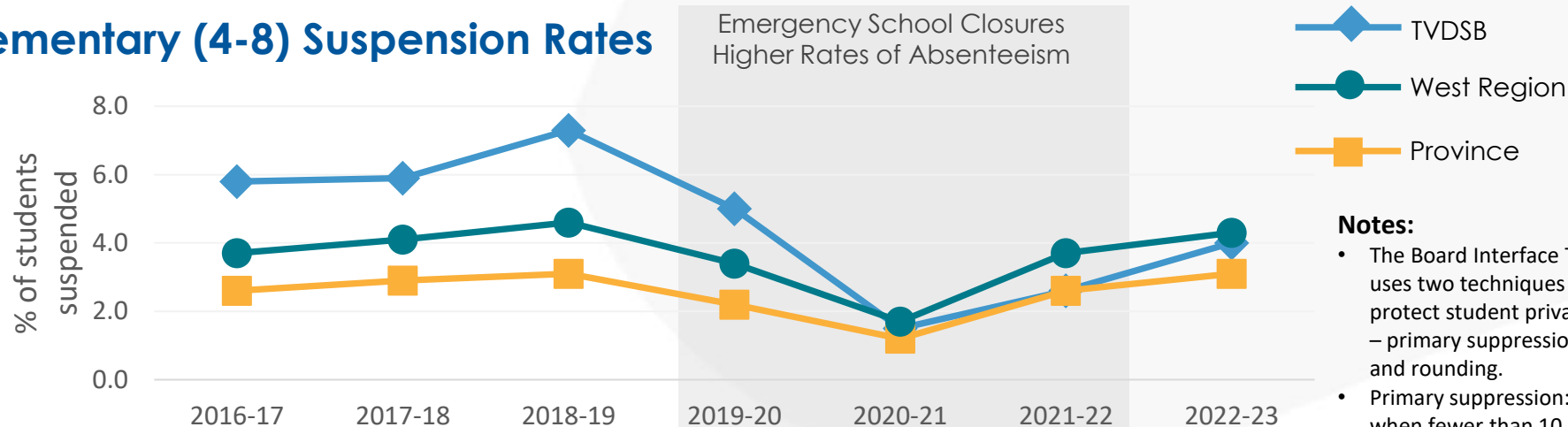
Suspension Rate Trends, by Panel: TVDSB, West Region, Province

Prior to 2020-21, gap wider between TVDSB and other boards across the Province for students in Grades 4 to 8.

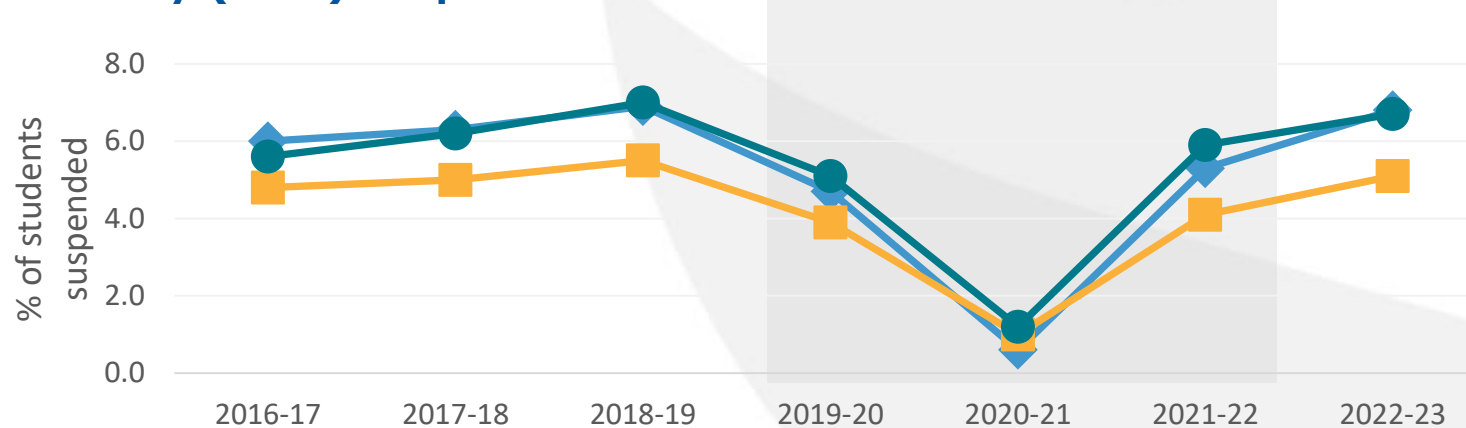
Grades 4 to 8 suspension rates in TVDSB now more in line with Regional and Provincial rates.

TVDSB and Regional rates are closely aligned and only slightly higher than Provincial rates for students in Grades 9 to 12.

Elementary (4-8) Suspension Rates



Secondary (9-12) Suspension Rates



- Notes:**
- The Board Interface Tool uses two techniques to protect student privacy – primary suppression and rounding.
 - Primary suppression: when fewer than 10 individual students are represented in a count or a percentage the data is suppressed.
 - Rounding: all data that represents 10 or more students is rounded to the nearest count of five and percentages are calculated based on the rounded values.
 - Rates for 2022-2023 are preliminary as of June 21, 2024, with all schools that made submissions to the Ministry of Education.

Source: Ontario Ministry of Education, Board Interface Tool, Suspension Tool

Suspension Rate Comparisons for Students in Grades 4-8

TVDSB suspension rates for students in grades 4-8 have **declined** since 2018-19.

Gaps in elementary suspension rates between TVDSB and boards in the **West Region**, and between TVDSB and the **Province** have closed.

	2018-19 (Baseline)	2022-23	Change Over Time
Elementary – Grades 4-8			
TVDSB Rates	7.3%	4.0%	↓
GAP with Region	2.7%	-0.4%	↓
GAP with Province	4.2%	0.8%	↓

Source: Ontario Ministry of Education, Board Interface Tool, Suspension Tool

Notes:

- Data presented on this slide was downloaded from the Ministry of Education’s Board Interface Tool.
- The Board Interface Tool uses two techniques to protect student privacy – primary suppression and rounding.
- Primary suppression: when fewer than 10 individual students are represented in a count or a percentage the data is suppressed.
- Rounding: all data that represents 10 or more students is rounded to the nearest count of five and percentages are calculated based on the rounded values.
- Rates for 2022-2023 are preliminary as of June 21, 2024, with all schools that made submissions to the Ministry of Education.
- Baseline year established by TVDSB.

Suspension Rate Comparisons for Students in Grades 9-12

Most recently released secondary suspension rate data is **about the same** in **TVDSB** as observed in 2018-19.

TVDSB suspension rates in secondary schools are **comparable** to **Regional** rates.

The **gap** between **TVDSB** secondary suspension rates and secondary **Provincial** suspension rates is about the same as observed in the baseline year.

	2018-19 (Baseline)	2022-23	Change Over Time
Secondary – Grades 9-12			
TVDSB Rates	6.9%	6.8%	---
GAP with Region	-0.1%	0.1%	---
GAP with Province	1.4%	1.7%	---

Source: Ontario Ministry of Education, Board Interface Tool, Suspension Tool

Notes:

- Data presented on this slide was downloaded from the Ministry of Education’s Board Interface Tool.
- The Board Interface Tool uses two techniques to protect student privacy – primary suppression and rounding.
- Primary suppression: when fewer than 10 individual students are represented in a count or a percentage the data is suppressed.
- Rounding: all data that represents 10 or more students is rounded to the nearest count of five and percentages are calculated based on the rounded values.
- Rates for 2022-2023 are preliminary as of June 21, 2024, with all schools that made submissions to the Ministry of Education.
- Baseline year established by TVDSB.

Expulsion Rate Comparisons for All Students (K-12)

TVDSB expulsion rates have **remained at 0.02%** since 2016-17 apart of 2020-21 when no students were expelled.

2021-22 expulsion rates in boards that did expel students **ranged from less than 0.01%** (fewer than 10 students) **to 0.12%** (n=45).

	2018-19 (Baseline)	2021-22	Change Over Time
Overall – Grades K-12			
TVDSB Rates and Counts	0.02% n≈15	0.02% n≈20	---
Provincial Rates and Counts	0.01% n≈315	0.01% n≈245	---

Source: Ontario Open Data Catalogue, Ministry of Education, Expulsion Rates by School Boards

- Notes:**
- Rates for 2022-2023 have not been publicly released through Ontario’s open data catalogue.
 - Ministry does not release regional expulsion rates.
 - Boards are unable to calculate regional expulsion rates due to suppression rules; specifically, many boards expel fewer than 10 students and therefore, the exact number of expulsions is not published.
 - Baseline year established by TVDSB.

Violent Incident Rate Comparisons: Students (K-12)

Boards must report the **total number of violent incidents** that occur on school premises during **school-run programs** committed by a **student** of the board or **any other person**. An incident involving one or more person should be **recorded as a single incident** and should not reflect the number of individuals involved.

The term **violent incident** is defined as the occurrence of any one of the following *or* the occurrence of a combination of any of the following:

- Possessing a weapon, including possessing a firearm
- Physical assault
- Sexual assault
- Using a weapon to cause or threaten bodily harm
- Hate and/or Bias Motivated
- Extortion
- Robbery

Source: Policy/Program Memorandum No. 120, May 16, 2011

	2018-19 (Baseline)	2022-23	Change Over Time
Violent Incidents per 1000 Students (K-12)			
TVDSB Rates	0.8*	0.9	+0.1
West Region Rates	1.0	1.8	+0.8
Provincial Rates	1.2	2.0	+0.8

Source: Ontario Ministry of Education, Board Interface Tool, Suspension Tool

Notes:

- *Internally estimated rate.
- The Board Interface Tool uses two techniques to protect student privacy – primary suppression and rounding.
- Primary suppression: when fewer than 10 individual students are represented in a count or a percentage the data is suppressed.
- Rounding: all data that represents 10 or more students is rounded to the nearest count of five and percentages are calculated based on the rounded values.
- Rates for 2022-2023 are preliminary as of June 21, 2024, with all schools that made submissions to the Ministry of Education.
- Not all boards submitted data, which may affect rates for the West Region and the Province.
- Baseline year established by TVDSB.

Sample Initiatives in TVDSB for 2024-25

- **Policy and Procedure Enhancements** – Safe Schools Policy, Safe Schools Procedure

- **Support for Administrators** – Progressive Discipline Support Tool and Data Tracking

- **Support for Staff** – Monthly Bullying Awareness and Prevention Resources, Implementation Coaching

- **Support for Students** – Revised School Support Counselling Delivery Model, Mental Health Literacy

- **Support for Families** – Bullying Awareness and Prevention and Mental Health Resources for Families, Ongoing Collaboration through Family and Community Well-Being Series

Additional Data

Suspension Rates by Subgroup

- e.g., Students Receiving Special Education Services

Suspension Data

- e.g., Frequency of Suspensions, Length of Suspensions
- e.g., Suspensions by Infraction Type (i.e., discretionary vs. non-discretionary)

Perceptual Data

- e.g., Sense of Safety, Belonging
- e.g., Concerns about Bullying

Thank You!